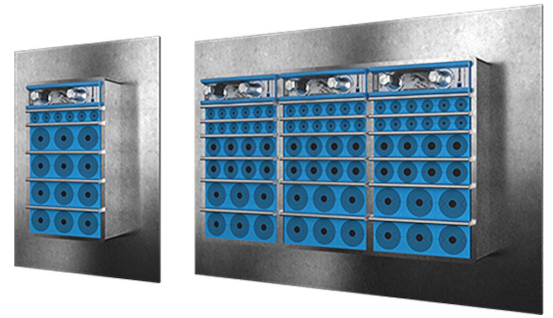




Roxtec G doorvoer

Doorvoer met flens, voor lassen.

De Roxtec G is een kabel- en leidingafdichting met stalen frame dat wordt gelast. De doorvoer kan in combinatie met een GE contraframe van verzinkt staal worden gebruikt om een doorvoer in een dikkere wand af te werken.



- Biedt ingebouwde reservecapaciteit

Producteigenschappen



Brandvertragend



Waterdicht



Gasdicht

Installatiestructuur



Kasten en behuizingen



Metaal

Montagetype



Lassen

Specificaties en certificaten

Brand

- A-KLASSE volgens IMO 2010 FTP-code
- E/EI-classificatie volgens EN 13501
- F/T-classificatie volgens UL 1479

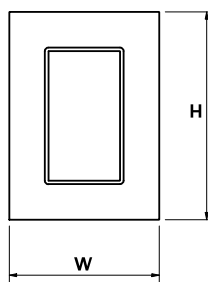
Dichtheid

- Gas: 2,5 bar (calamiteitendruk)
- Water: 4 bar (calamiteitendruk)

Afmetingen frame

mm/kg

De onderstaande frame-uitvoeringen zijn een beperkte selectie. Ga naar [roxtec.com](https://www.roxtec.com) voor het volledige assortiment frames en configuraties.

	Titel	Frame-openingen	Vrije doorvoerruimte	Buitenafmetingen WxHxD	Afmetingen opening w x h	Gewicht	Art. nr.
	G 6x1 PRIMED	1	120 x 180	252.5 x 350 x 60	188(+15/-15) x 290(+15/-15)	4.4	G0060000000112
	G 6x2 PRIMED	2	120 x 180	383 x 350 x 60	318(+15/-15) x 290(+15/-15)	7.4	G0060000000212
	G 6x3 PRIMED	3	120 x 180	513.5 x 350 x 60	449(+15/-15) x 290(+15/-15)	9.8	G0060000000312
	G 6x1 AISI316	1	120 x 180	252.5 x 350 x 60	188(+15/-15) x 290(+15/-15)	4.8	G0060000000121
	G 6x2 AISI316	2	120 x 180	383 x 350 x 60	318(+15/-15) x 290(+15/-15)	7.3	G0060000000221
	G 6x3 AISI316	3	120 x 180	513.5 x 350 x 60	449(+15/-15) x 290(+15/-15)	9.8	G0060000000321



Gegevens van afdichtcomponenten

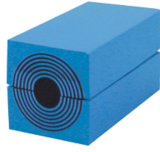
Afdichtcomponenten



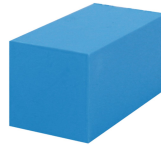
vetstick



Wedge en Wedgekit



RM module met
Multidiameter™



Massieve RM
compensatiemodule



fixeerplaat



fixeertools



lastools



afdichtset

Ga naar [roxtec.com](https://www.roxtec.com) voor uitgebreide informatie.

The product information provided by Roxtec does not release the purchaser of the Roxtec system, or part thereof, from the obligation to independently determine the suitability of the products for the intended process, installation and/or use.

Roxtec gives no guarantee for the Roxtec system or any part thereof and assumes no liability for any loss or damage whatsoever, whether direct, indirect, consequential, loss of profit or otherwise, occurred or caused by the Roxtec systems or installations containing components not manufactured by an authorized manufacturer and/or occurred or caused by the use of the Roxtec system in a manner or for an application other than for which the Roxtec system was designed or intended.

Roxtec expressly excludes any implied warranties of merchantability and fitness for a particular purpose and all other express or implied representations and warranties provided by statute or common law. User determines suitability of the Roxtec system for intended use and assumes all risk and liability in connection therewith. In no event shall Roxtec be liable for indirect, consequential, punitive, special, exemplary or incidental damages or losses.

The Roxtec products are offered and sold in accordance with the conditions of the Roxtec General Terms of Sales. The latest version of the Roxtec General Terms of Sales can be downloaded from <https://www.roxtec.com/en/about-us/about-roxtec/general-terms-of-sales/>

We reserve the right to make changes to the product and technical information without further notice. Any errors in print or entry are no claims for indemnity. The content of this publication is the property of Roxtec International AB and is protected by copyright.

This document was generated on: 2024-04-12